

# Young Auditorium

UNIVERSITY OF WISCONSIN - WHITEWATER

930 W. Main St. Whitewater, Wisconsin 53190 262-472-4444

[www.uww.edu/youngauditorium](http://www.uww.edu/youngauditorium)

## AUDITORIUM STAFF

|                     |                          |              |  |
|---------------------|--------------------------|--------------|--|
| Director:           | <b>Ken Kohberger</b>     | 262-472-5630 | <a href="mailto:kohbergk@uww.edu">kohbergk@uww.edu</a>           |
| Assistant Director: | <b>Shannon Dozoryst</b>  | 262-472-1432 | <a href="mailto:dozoryst@uww.edu">dozoryst@uww.edu</a>           |
| Development:        | <b>TBA</b>               | 262-472-6224 | <a href="mailto:yadevelopment@uww.edu">yadevelopment@uww.edu</a> |
| Technical Director: | <b>Hans Pregler</b>      | 262-472-5631 | <a href="mailto:preglerh@uww.edu">preglerh@uww.edu</a>           |
| Audience Services:  | <b>Michael Morrissey</b> | 262-472-1487 | <a href="mailto:morrissem@uww.edu">morrissem@uww.edu</a>         |
| Marketing:          | <b>Aaron Wesolowski</b>  | 262-472-5705 | <a href="mailto:wesolowa@uww.edu">wesolowa@uww.edu</a>           |
| Office Manager:     | <b>Malinda Hunter</b>    | 262-472-4869 | <a href="mailto:hunterm@uww.edu">hunterm@uww.edu</a>             |

## STAGE SPACE

Proscenium Opening – 46' W x 27' H  
Deck – 95'-4" x 41'-9" Plaster Line to Back Wall  
Apron – 46' - 0" x 5'-2" Plaster Line to Pit Edge  
Orchestra Pit – 40' x 11'8" – approx 450 sq. ft.  
Adjustable to 8'-0" below stage level  
Apron overhangs U.S. wall of pit by 4'0"

|                               |      |
|-------------------------------|------|
| <b>SEATING CAPACITY</b> ..... | 1300 |
| Main Floor.....               | 752  |
| Lift Area.....                | 48   |
| Balcony.....                  | 500  |

## FLY SYSTEM

Main Drape -55' x 32'  
Guillotine or traveler from SR deck  
Rigging System -Single Purchase counterweight  
Weight: 25,000lbs available  
Line Sets: 46 sets at 7 in. o.c. – 6 lift lines  
Arbors: 1,200 lbs capacity  
Battens: 63' long with 63' of travel from deck  
Grid: 68' above deck, overhung  
Permanent Installations (from P.L.)  
Main Curtain at 2'-0"  
Orchestra Shell Ceiling (2) at 7'-3" & 15'-5"  
Electrics at (3) 5'- 6, 13'-1, 21'-10, 28'-10.  
Upstage Black Traveler (1) at 26'-6"

## STAGE FLOOR

Sprung oak floor-dark finish-no traps  
No penetrations allowed.  
Dance Floor - black/gray - 59' x 39'

## LOADING DOCK

Loading Door: 8' W x 10 'H - 45' to stage  
Loading Dock: Dock is truck level (+48")  
Dock plate (+/- 7") 4'-8" wide  
Ramp (+/-21") 3'-0" wide

## WARDROBE

Location: Upstage left on stage level  
Amenities: Washer and Dryer, Steamers (2)

## DRESSING ROOMS (4) all stage level S.R.

Make-up stations, toilet and shower each  
Star (2): Max. capacity 6,  
Chorus (2): Max. capacity -18

## KACHEL CENTER

Rehearsal, auxiliary dres. rm, warm-ups.  
Prior arrangements required.  
32 ft. x 68 ft. - Sprung hardwood floor

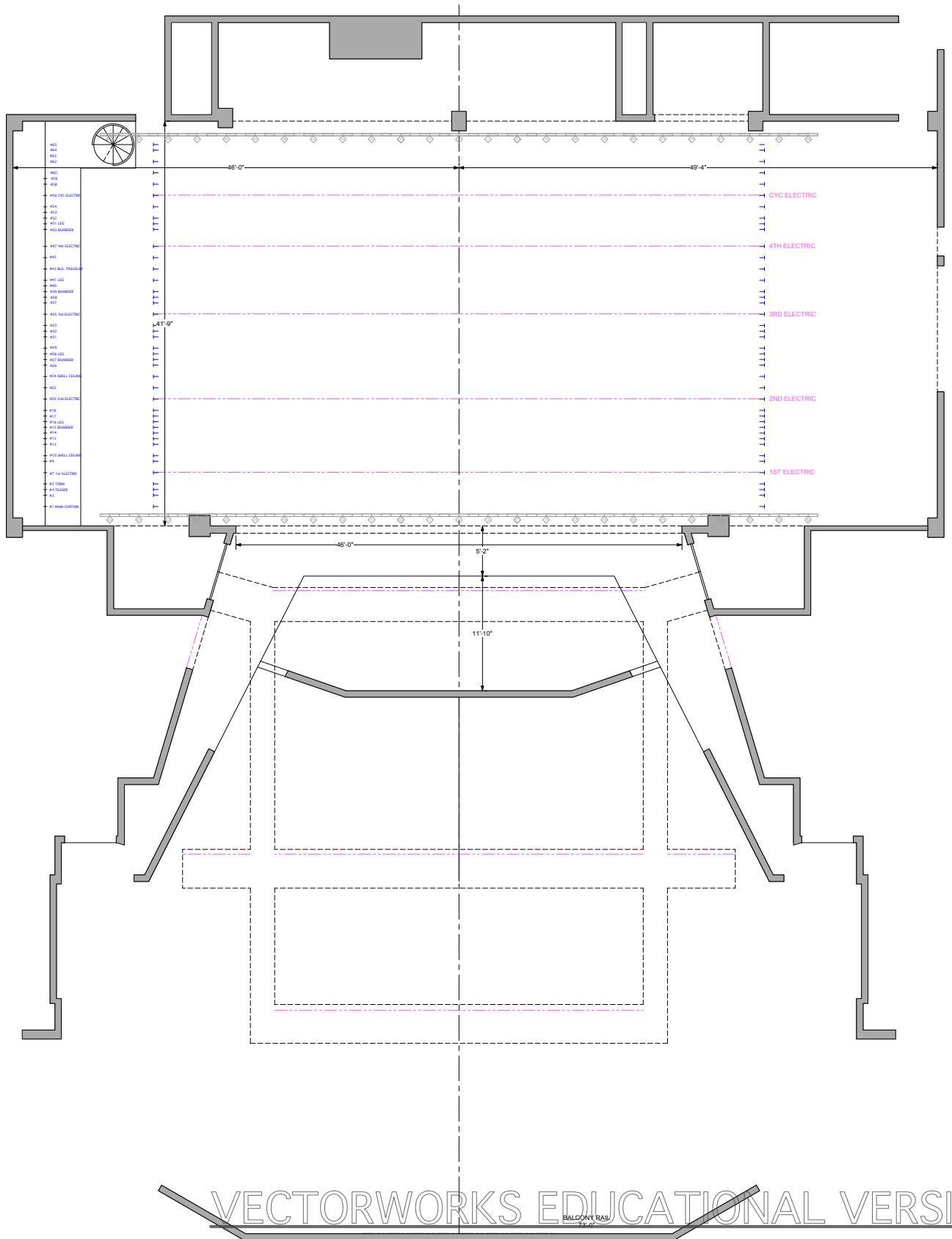
## STAGE MANAGER'S PANELS

Locations: DSL pros. wall and Light Booth  
Controls lighting in the auditorium chamber  
Paging mic location. Intercom main stations

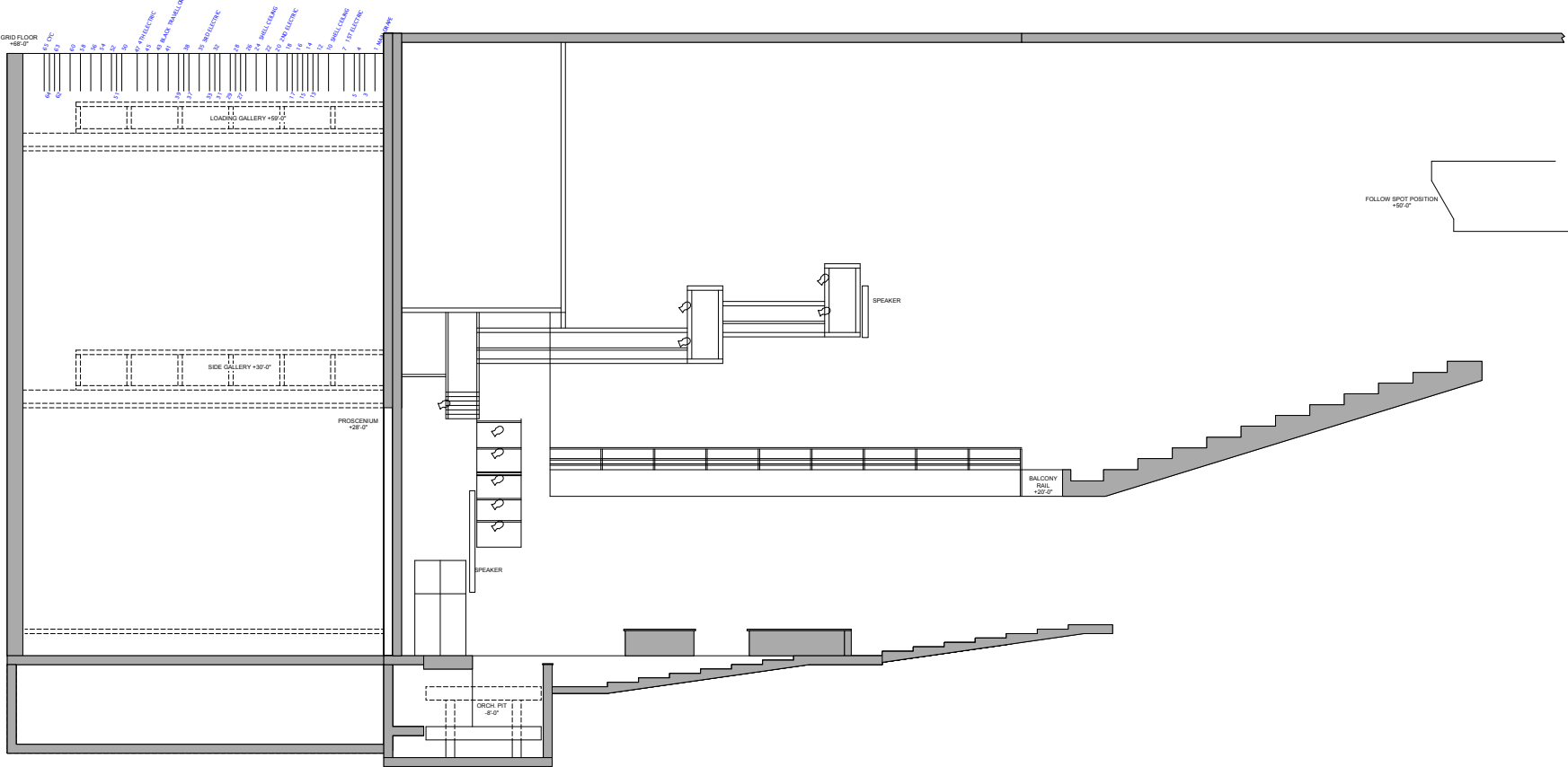
## TOURING PRODUCTION OFFICE

At Loading Dock  
1 phone line, desk, chairs  
Internet Access

# Young Auditorium, UW-Whitewater – Technical Specifications – Revised 05/2017



Young Auditorium, UW-Whitewater - Technical Specifications - Revised 05/2017



**ELECTRICS**

(All connectors are grd 20 amp stage pin)

**CONTROL CIRCUITS (384)**

336 devoted stage dim circuits - 384 dimmers available in rack  
 24 devoted non-dim circuits

| <u>Front of House</u> |              | Distance         | Height             | House           |
|-----------------------|--------------|------------------|--------------------|-----------------|
| <u>Position</u>       | <u>Width</u> | <u>to Prosc.</u> | <u>Above Floor</u> | <u>Circuits</u> |
| 1st Catwalk           | 42'          | 4'               | 28'                | 24              |
| 2nd Catwalk           | 58'          | 34'              | 33'                | 30              |
| 3rd Catwalk           | 38'          | 49'              | 37'                | 24              |
| Box Booms             | 6'           | 13'              | 15'-29'            | 16 ea           |
| Balcony Rail          | 3 @ 12'      | 72'              | 20'                | 6               |

(all F.O.H. circuits run through transfer panel DSL)

**On Stage**

Rigged Electric Battens (4) - 63' long - 28 circuits each  
 21 Grid drop boxes - 3 circuits each  
 5 circuits - SR gallery  
 19 circuits - wall pockets

**INSTRUMENTS**

| <u>QTY</u> | <u>MAKE/MODEL</u> | <u>SIZE</u>  | <u>DEGREE</u> | <u>WATTS</u> |
|------------|-------------------|--------------|---------------|--------------|
| 26         | ETC Source 4      | 6 x 22       | 14            | 575          |
| 30         | ETC Source 4      | 6 x 16       | 19            | 575          |
| 40         | ETC Source 4      | 6 x 12       | 26            | 575          |
| 50         | ETC Source 4      | 6 x 9        | 36            | 575          |
| 8          | ETC Source 4      | 6 x 4.5"     | 50            | 575          |
| 4          | ETC Source 4      | Zoom         | 15-30         | 575          |
| 42         | Strand #3380      | 6" Fresnel   | --            | 1000         |
| 24         | ETC S4 PARs       | 6"           | 4 lens        | 575          |
| 24         | PAR 64            | 8"           | MFL & NSP     | 1000         |
| 6          | Altman Far Cyc    | 3 circuit    | --            | 1000/        |
| 6          | Altman Strips     | 3 color/7.5" | --            | 750/         |
| 24         | ETC Desire LED    |              | various       |              |
| 18         | ETC Vivid LED     |              | various       |              |

**Followspots**

2 - Lycian Superstar 1275      2 - Altman Orbitor (Marc 350/16T)  
 Booths: (one on center - 2 at sides) - 130 ft. to proscenium

**LIGHTING CONTROL**

ETC Ion with 2 x 20 fader wing – Strand Network with nodes to DMX 512

**TRANSFER PANEL**

Located DSL with all FOH catwalk circuits. Direct DMX link to FOH located S.R.

**ROAD SHOW POWER**

| <u>Panel</u> | <u>Phase</u> | <u>Amp</u> | <u>Use</u> | <u>Location</u>     |
|--------------|--------------|------------|------------|---------------------|
| A            | 3            | 400        | Dimmers    | DSL proscenium wall |
| B            | 3            | 400        | Dimmers    | DSL proscenium wall |
| C            | 3            | 200        | Sound      | DSR proscenium wall |

**SOUND**

**HOUSE SYSTEM**

Stereo - Renkus Heinz Iconix Live w/ RH subs      Center Delay Array – Balcony  
DSP – Symetrix Express Cobra  
Front Fills – Renkus Heinz TRX61

**AMPLIFIERS**

Front Fills – Crown Com-Tech  
Backstage and Lobby – Peavey MA 6150T

**MIXING CONSOLE**

2 - Yamaha CL3 – FOH & Monitor      INPUTS: 64mic/line - 8 stereo  
   OUTPUTS: 24 mixes, 8 matrices  
4 – Yamaha Rio 1608 stage boxes  
Console Location: rear of the Main Floor – 100' to stage

**MONITOR SPEAKERS**

4 - JBL 4738 3way cabinets      8 – EAW – MW12 monitors  
4 - JBL Control 1 FX Speaker      4 – EV Eliminator floor monitors

**MICROPHONES**

|                       |                     |                             |
|-----------------------|---------------------|-----------------------------|
| 8 - Shure Beta 58     | 2 - Shure SM98      | 4 - Shure ULX Pro Receivers |
| 3 - Crown PCC 160     | 5 - Shure Beta 57   | 2 – Countryman E6,          |
| 4 - Shure SM 81       | 1 - AKG D112        | 4 – Shure Lavaliere OR      |
| 1 - Crown PZM         | 2 - AKG CK90        | 4 – Handheld Beta 87        |
| 6 – Sennheiser E604   | 2 – GT AM-52        | 3 – AKG Perception 120      |
| 1 – Barcus Berry 4000 | 2 – Sennheiser E609 |                             |

**PLAYBACK**

1 - HHB CDR-830 Recorder      1 - Sony MDS-E58 – Mini Disc Rec/Player  
1 - Tascam CD 301 - CD player      1 – Mac Mini Desktop

**ROAD CONSOLE LOCATION**

**Position** located house left, mid house      50' to stage    12' w x 7' d  
Cable run direct to stage

**ORCHESTRA SHELL**

8 panels, 10' w x 25' h and (2) ceilings  
enclosed 860 sq. ft. in addition to apron and lift area, 920 sq. ft.

**BACKLINE**

|                                 |   |
|---------------------------------|---|
| Steinway 9' concert grand piano | Gallien-Krueger 400RB Bass Amp              |
| Baldwin upright piano           | Hartke VX410 Bass Cabinet                   |
| Fender Hot Rod DeVille amp      | Other backline available upon request w/fee |

## VIDEO

### **Projector**

Panasonic 12k lumen projector with long throw zoom lens

### **PLAYBACK**

Sony DVD Player, Panasonic Blue-Ray Player, Mac Mini or Laptop

### **VIDEO LINES TO STAGE**

(3) coaxial/BNC lines from video control to DSR proscenium room

### **SCREEN**

Front projection screen 18.75'h X 25'w 4:3 ratio. Stored on lineset #3

## CARPENTRY

### **PLATFORMS**

(32) 4'X8' Nivoflex Podest System decks w/various height legs

### **LADDERS AND LIFTS**

Ladders- (2) 6ft, (1) 8ft, (2) 12ft - All ladders are fiberglass frames and in good working order.  
Genie – single man lift with max height of 40'. Outrigger use is required.

### **TOOLS AND SHOP AVAILABILITY**

Use of tools and building areas in the loading dock may be available upon request. Please check with management, with as much advanced notice as possible.

## RIGGING

### **GALLERIES AND PIN-RAIL**

Pin-rail gallery located 30'-0" above stage deck  
Loading gallery located 59'-0" above stage deck

### **GRID IRON**

Grid Located at 68' above stage deck  
Access to galleries and grid via circle stairwell U.S.R.

### **STAGE CURTAINS**

House hang is listed on rigging schedule. The following additional curtains are available:  
Legs – 30' X 6" – 4 panels                      Scrim – 30' X 58' – 1 panel  
Borders – 30' X 8' – 2 panels

## COMMUNICATIONS

Intercom: Clear-Com, 2 channel - 10 headsets, 3 handsets - throughout building  
Production Monitor/Page system - throughout building  
Hearing Impaired – Listen System RF (packs distributed through FOH)

Young Auditorium, UW-Whitewater – Technical Specifications – Revised 05/2017

Young Auditorium - Rigging Schedule

| Line # | U.S. of P.L. | House Hang       | Size HxW   | Permanent Hang | Show Schedule        | Line # |
|--------|--------------|------------------|------------|----------------|----------------------|--------|
| 1      | 2'0"         | Main Drape       | 32 x 55 ea | ***            | 50% Full - Burgundy  | 1      |
| 3      | 3'2"         |                  |            |                |                      | 3      |
| 4      | 3'9"         | Border           | 30 x 54    | ***            |                      | 4      |
| 5      | 4'4"         | Leg              | 30 x 15 ea |                |                      | 5      |
| 7      | 5'6"         | Electric #1      |            | ***            |                      | 7      |
| 9      | 6'8"         |                  |            |                |                      | 9      |
| 10     | 7'3"         | Shell Ceiling    |            | ***            |                      | 10     |
| 12     | 8'5"         |                  |            |                |                      | 12     |
| 13     | 9'0"         |                  |            |                |                      | 13     |
| 14     | 9'7"         |                  |            |                |                      | 14     |
| 15     | 10'2"        | Border           | 16 x 63    |                |                      | 15     |
| 16     | 10'9"        | Leg              | 36 x 15    |                |                      | 16     |
| 17     | 11'4"        |                  |            |                |                      | 17     |
| 18     | 11'11"       |                  |            |                |                      | 18     |
| 20     | 13'1"        | Electric #2      |            | ***            |                      | 20     |
| 22     | 14'3"        |                  |            |                |                      | 22     |
| 24     | 15'5"        | Shell Ceiling    |            | ***            |                      | 24     |
| 26     | 16'7"        |                  |            |                |                      | 26     |
| 27     | 17'2"        | Border           | 12 x 63    |                |                      | 27     |
| 28     | 17'9"        | Leg              | 36 x 15    |                |                      | 28     |
| 29     | 18'4"        |                  |            |                |                      | 29     |
| 31     | 19'6"        |                  |            |                |                      | 31     |
| 32     | 20'1"        |                  |            |                |                      | 32     |
| 33     | 20'8"        |                  |            |                |                      | 33     |
| 35     | 21'10"       | Electric #3      |            | ***            |                      | 35     |
| 37     | 23'0"        |                  |            |                |                      | 37     |
| 38     | 23'7"        |                  |            |                |                      | 38     |
| 39     | 24'2"        | Border           | 8 x 63     |                |                      | 39     |
| 40     | 24'9"        | Leg              | 36 x 15    |                |                      | 40     |
| 41     | 25'4"        |                  |            |                |                      | 41     |
| 43     | 26'6"        | Black Traveler   | 32 x 33 ea | ***            | 50% Fullness - Black | 43     |
| 45     | 27'8"        |                  |            |                |                      | 45     |
| 47     | 28'10"       | Electric #4      |            | ***            |                      | 47     |
| 50     | 30'7"        | Border           | 8 x 63     |                |                      | 50     |
| 51     | 31'2"        | Leg              | 36 x 15    |                |                      | 51     |
| 52     | 31'9"        |                  |            |                |                      | 52     |
| 53     | 32'4"        |                  |            |                |                      | 53     |
| 54     | 32'11"       |                  |            |                |                      | 54     |
| 56     | 34'1"        |                  |            |                |                      | 56     |
| 58     | 35'3"        |                  |            |                |                      | 58     |
| 59     | 35'10"       |                  |            |                |                      | 59     |
| 60     | 36'5"        | Black Scrim      | 28 x 56    |                |                      | 60     |
| 62     | 37'7"        | Cyc LEDs         |            |                |                      | 62     |
| 63     | 38'2"        |                  |            |                |                      | 63     |
| 64     | 38'9"        | Full Stage Black | 28 x 63    |                |                      | 64     |
| 65     | 39'4"        | CYC - dove gray  | 28 x 58    |                |                      | 65     |

**Technical Policies**

A manager of the event, who is able to make decision on behalf of the talent and company, will attend a safety and logistics meeting with the Young Auditorium staff 45 minutes before scheduled house open. This meeting generally takes place in the loading dock, unless otherwise notified.

No holes in the stage floor - nails, screws, staples, stage screws, etc. are prohibited. Heavy equipment, which can damage the stage floor, may need special precautions and clearance by the Young Auditorium Technical Director.

No eating or drinking in the auditorium. Smoking is prohibited on campus.

All flash powder, explosives, fire, lasers or any dangerous device must meet all local, state, and federal fire and safety regulations and be approved by Technical Director before use.

Young Auditorium management and staff reserve the right to call for an evacuation of the audience and backstage areas in the case of an emergency. (fire, tornado, etc.)

All equipment must have proper and functional safety cables, rigging hardware, electrical cables, grounding, etc. Equipment that does not meet manufacturers safety regulations and standard theatrical practices will not be allowed on stage.

All rigging and fly-rail operations are under the discretion of the Young Auditorium staff. Any disapproval of items being flown, the rate or technique of flying such items, or the use of the items being flown will be remedied per the Young Auditorium Technical Director's satisfaction.

Scenery construction, painting, gluing and the like are restricted to the Loading Dock. Assembly of scenery is permitted on stage. Specifics of on stage painting and construction should be discussed with the Technical Director prior to any action.

Young Auditorium allows the FOH audio mix position in the rear of the orchestra seating area, where seats have been cleared. Sound technicians are expected to operate from this position during the performance with all due respect to the audience seated nearby. Specifically, all computer monitors and the engineer will need to be as low to the ground as possible.

The Young Auditorium staff has the final say on the overall sound levels in the auditorium. Visiting personnel may be asked to adjust sound levels to suit the house wishes.

If your event is to be interpreted for the deaf, the interpreter will be located stage left/house right. A special light fixture will be provided for their illumination during the performance.

Should the decision be made to use a sound system or portions of a system that are supplied by the Artist, the auditorium management requires an audio feed for the hearing impaired system.

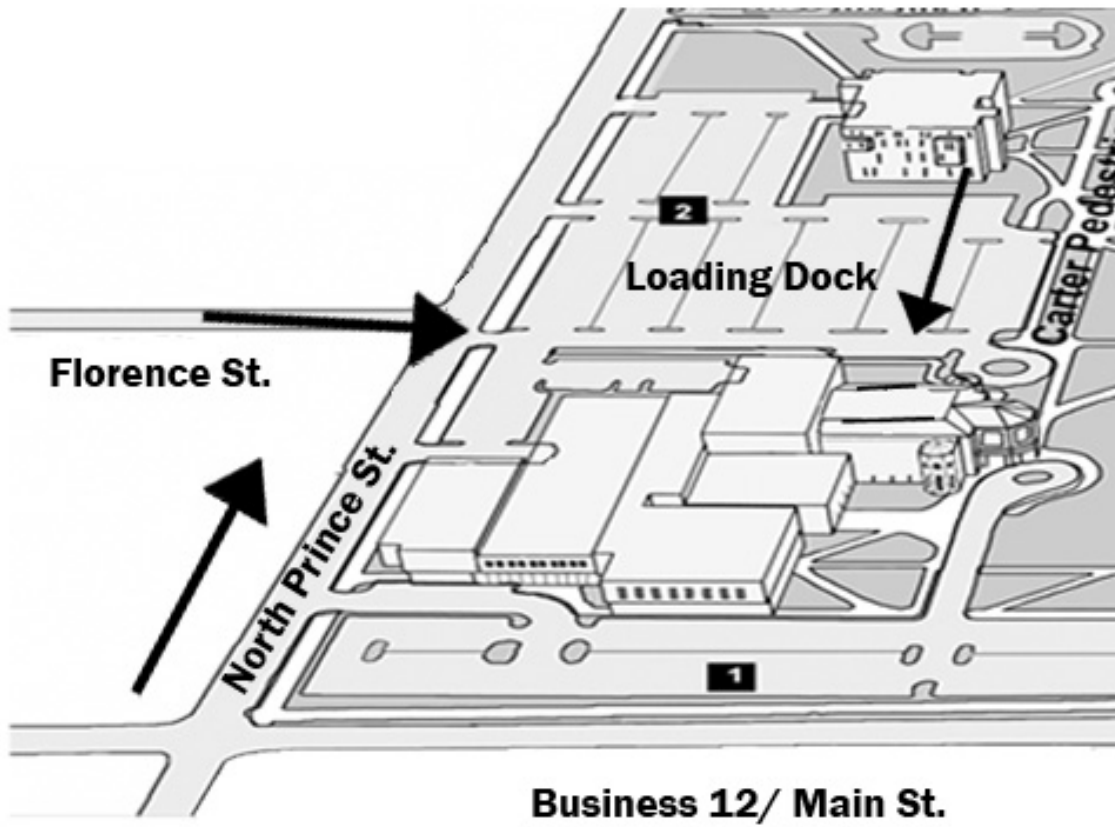
Only House staff and crew, production staff and performers are allowed backstage. All production personnel must wear identification while in the backstage area. Touring sound engineers agree to patch in a mac mini computer with Q-lab files that will announce evacuation procedures to our patrons, in an emergency. In addition, sound engineers will be ready to activate a specified sound cue, through the proper systems, upon the request of Young Auditorium staff.



## **Young Auditorium, UW-Whitewater – Technical Specifications – Revised 05/2017**

The user will pay for damages to the premises, equipment or properties of the auditorium caused by the user, either intentionally or through negligence. It is further understood that the Auditorium will furnish artist management with a detailed statement of all such damages and cost of repair.

Strike of performance equipment will take place immediately after the final performance unless arranged in advance with the Technical Director.



**Business 12/ Main St.**

