

Front cover - © 1999-2018 Shutterfly, Inc. All rights reserved.

GuiSheng Wang   Zong Gu  
Wei Zhen   JiaDuo Li   LinXia Jiang



UW-Whitewater 2018  
Annette and Dale Schuh Visiting Artist Endowment



"Watching demonstrations, working & painting side by side with the artists and being exposed to a new point of view were among the highlights of this experience. Thank you to the artists and to Annette and Dale Schuh for providing this experience to learn directly from these masters."  
(UW-W Department of Art and Design student)



**山外青山**

Landscapes Beyond Borders: Master Artists Inspire  
Schuh Visiting Artist Endowment, 2018

Fall 2018, the Schuh Visiting Artist Endowment afforded the Department of Art and Design students, faculty, and members of the community the opportunity to learn from and work alongside five prominent visual artists and professors of painting: four from Beijing Normal and one from Buffalo State universities. Through an unforgettable period of cross-cultural communication and exchange, UW-W students were exposed to various dimensions of the painting languages of China - en plein air and traditional painting, with attention also to the hybridities that, as Professor Wei Zhen put it, "usher in new discoveries of thought and feeling." The artists: JiaDuo Li, Zong Gu, GuiSheng Wang, Wei Zhen, and LinXia Jiang were generous with their time, energies, and insights. The students were grateful for the multi-faceted residency that exposed them to new vistas in thought, art histories, and studio practice.

"The Schuh residency was a rare opportunity for our students to learn from acclaimed artists of international reputation," remarked Dr. James Bronson, interim Chairperson of the Department of Art and Design. "Members of the Schuh Visiting Artist Committee, coordinated by Dale Kaminski, worked tirelessly in advance of and during the artists' two week visit and because of their efforts, the visit was a success."

With support from UW-W Provost, Susan Elrod and Chancellor, Dr. Beverly Kopper, the 2018 Schuh Visiting Artist program was facilitated by a collaborative effort on the part of dedicated faculty and staff in the Department of Art and Design. Faculty member Bethann Handzlik-Moran created this beautiful booklet in commemoration of the residency.

The visit of this year's guest artists enriched our students understanding of one of the oldest continuous artistic traditions in the world - and moved our hearts.

Eileen M. Hayes, Ph.D.  
Dean, College of Arts and Communication

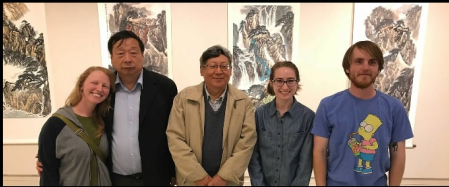




## Professor GuiSheng Wang



"This opportunity was so educational and eye opening. I loved watching the Professors do their thing. Being able to try it opened my eyes up to other techniques. Watching the artists make those mountains out of rocks was my favorite." (UW-W student)



## Professor Zong Gu



"My understanding, intrigue, and excitement for oil painting is much greater now. I loved painting outside. I found it fascinating how easy they made it look."  
(UW-W Department of Art and Design student)





## Professor Wei Zhen



"I feel like I saw a whole new side of the arts and came out of this experience with a much stronger understanding of a beautiful culture. I have been so inspired by this whole thing. Not only have I found a new place I want to travel to but a new art form that I love and want to keep practicing. Professor Wei Zhen especially inspired me."  
(UW-W Department of Art and Design student)



## Professor JiaDuo Li



*"Seeing the artists perform their craft rendered me speechless and gave me so much respect and admiration for the years of study that go into the arts. Painting alongside them and getting their feedback was an honor. I learned so much in such a short time because of the almost one-to-one experiences."  
(UW-W Department of Art and Design student)*



Professor LinXia Jiang



*"The whole experience has been so rewarding. I absolutely loved the workshops. They were not only educational but so fun too! I really appreciated hearing from the artists and how passionate they were about their art and culture."  
(UW-W Department of Art and Design student)*

# "Excursion Yellowstone" Fiskum Gallery Exhibition and Demonstrations Professors GuiSheng Wang and JiaDuo Li

Professor GuiSheng Wong and JiaDuo Li traveled with UW-W students on the Yellowstone Travel Study course run by Dr. George Clokey. The exhibition in the Fiskum Gallery highlighted the works they created on the trip.



"Comparative Historic Overview"  
Lecture Professor Wei Zhen



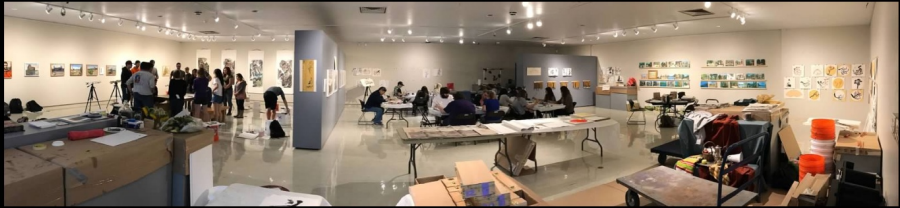
*"All of the images we saw in the lecture made me want to keep trying the ink painting in different ways. It was important to understand the tradition as it related to contemporary practice and to Western perspectives. The next day when I did more ink drawing I started from a fuller understanding of what could be expressed."  
(UW-W Department of Art and Design student)*



Crossman Gallery  
山外青山 "Landscapes Beyond Borders"  
Master Artists Inspire: En Plein Air"



The Crossman Gallery was used as a formal exhibition space and transformed into a studio space for the students, artists and public. As the residency progressed, students, staff and faculty works were exhibited side-by-side with the Visiting Artists works in a communal exhibition.



## UW-Whitewater Nature Preserve Praire En Plein Air Paint-A-Long

The beautiful UW-W Prairie was a perfect site for the visiting artists to work alongside students, faculty and the community. Provost Elrod, Dean Hayes, Chair Bronson and even Willie Warhawk gave en plein air painting a try.



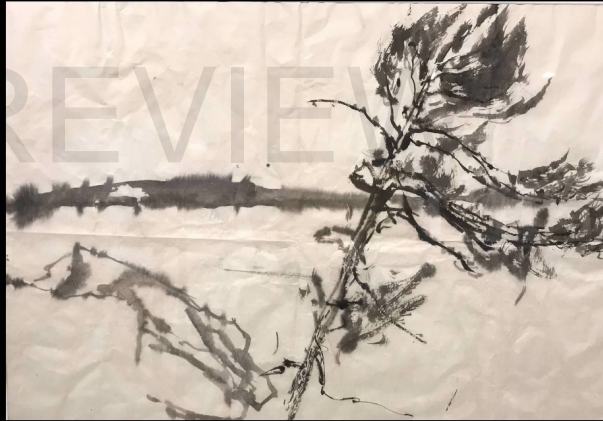
"My favorite part of this experience was the plein air painting in the prairie. I didn't even know we had a Nature Preserve. I was lucky because I was able to have a one-on-one learning experience with the artists. They helped me understand more than just painting."  
(UW-W Department of Art and Design student)

"From Beijing to Buffalo:  
Hybridity and Chinese Painting Traditions"  
Panel Discussion: Light Recital Hall  
Reception: Crossman Gallery



## Department of Art and Design En Plein Air Field Trip Devil's Lake / Spirit Lake, Wisconsin State Park

Two buses were filled with excited students, visiting artists, faculty and supplies. Students could select either ink & Chinese brush kits or oil painting kits to use for the day. The sun sparkled on the lake and the tall pines were fragrant. Everyone returned invigorated by the fulfillment of applying the lessons learned and by the natural beauty of the State Park.



"I am so thankful for the trip we got to take to the state park to paint en plein air with the artists, our professors and our friends. It was a new experience. I had never been to Devil's Lake. It was peaceful and beautiful. I will try to go paint outside again". (UW-W student)

## UW-Whitewater En Plein Air Painting Workshops Chinese Ink Brush & Oil Painting

The artists led students out onto campus to paint en plein air. Students used both oil and ink painting kits supplied by the residency. They marveled at the comparison of canvas to rice paper and oil to ink.



"I loved going outside to paint. I got to paint en plein air with both ink and brush on rice paper and with a really neat oil kit. I loved that the materials were provided and I didn't have to get anything. The artists were excited to see our work and share theirs. Painting all together was the best." (UW-W Department of Art and Design student)

GuiSheng Wang

GuiSheng Wang is a Professor and Director of Doctoral students in the School of Art and Media at Beijing Normal University, China. He is the former Associate Dean of the School of Arts and Media at Beijing Normal. Professor Wang's art work combines traditional Chinese brush painting with Western plateau painting techniques. He has had solo and group exhibitions in the United States, Germany, France, Japan, Turkey, and Hong Kong.

Zong Gu

Zong Gu is a Professor and Director of Doctoral students and Chairperson of Art and Design in the School of Art and Media at Beijing Normal University, China. He studied oil painting at the People's Liberation Army Academy of Art in China and at the Russian Academy of Fine Arts in Russia. He approaches paintings with respect for established academic aesthetics and a commitment to contemporary innovation. He has held solo exhibitions at venues including the Today Art Museum in Beijing, Repin Academy of Art in St. Petersburg, Russia, and National Art Museum of China.

Wei Zhen

Wei Zhen is a Professor of Art in the School of Art and Communication at Beijing Normal University where as a former Dean he teaches painting and general education classes in art history and art education. He is a Fulbright Scholar affiliated with the School of Visual Art in New York and his art works have been presented in exhibitions in the United Kingdom, Greece, Germany, Italy, Chile and the U.S.

JiaDuo Li

JiaDuo Li is an Assistant Professor in the School of Art and Communication at Beijing Normal University. His artwork has been exhibited in both China and the U.S. Li has also authored several books, including Li Jiaduo Chinese Paintings (Hubei Arts Publishing House, 2011), Western Masters - Schiller (Anhui Arts Publishing House, 2010), and Illustrated Handbook of Chinese Painting Genre (China Light Industry Press, 2008).

LinXia Jiang

LinXia Jiang is a painter and a Professor of Art at Buffalo State University SUNY. He has exhibited his work-including still lifes, portraits, and landscapes-nationally and internationally. He is the Chair of the Department of Fine Arts at Buffalo State, where he also coordinates the painting and drawing program.

For more information: [www.uww.edu/cac/art-design](http://www.uww.edu/cac/art-design)



"Getting critiques from the master painters was incredible. It was also amazing to watch them work so carefully and methodically. I had never spoken with someone from China. It was really neat to speak to the artist with a translator. I will never forget this experience."  
(UW-W Department of Art and Design student)



The U W-Whitewater Annette and Dale Schuh Visiting Artist Endowment, again this year, allowed us to bring in an extraordinary group of artists to work with our students. Thank you Annette and Dale Schuh for making this programing possible.

We express our deep appreciation to the artists. Professors GuiSheng Wang, Zong Gu, JiaDuo Li, Wei Zhen, and LinXia Jiang exhibited their works, traveled with our students, provided demonstrations, painted en plein air, delivered lectures, presented a panel discussion, and provided critiques, all for the benefit of our community. They have left a repository of knowledge and diversified our experience which will influence us in ways we cannot yet imagine. On behalf of our students we are indebted and most grateful to them.

"Schuh 2018" has been an extraordinary year of cultural exchange, artistic experience and intellectual discourse.

The 2018 Schuh Committee:

Michael Flanagan, Julia Ince, Dale Kaminski, Leslie LaMuro,  
Sue Messer, Bethann Moran-Handzlik, and Xiao Zhang



Back cover - © 1999-2018 Shutterfly, Inc. All rights reserved.

