



OH THE PLACES YOU'LL
GO!
GAME CHANGE FOR
YOUNG ADULTS

Johanna Bergan

Gwen White

A stylized graphic of a human face in profile, facing right. The face is composed of various colors: a dark blue section on the left, a light blue section in the middle, and a pinkish-red section on the right. The eyes are large and blue with black pupils. The mouth is open, showing a blue tongue and a pink interior. The graphic is set against a light grey background.

Game Change

Places we have
been



Interplay of Three Forces



**Individual Developmental
Transition**



**Family
Developmental
Transition**

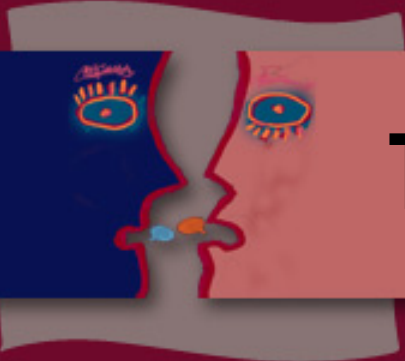


Institutional Transition



There is No Magic Age

- Developmental changes accumulate gradually over time
- Functional capacities build gradually over time



There is no magic age

- Families are the individuals who continue to be involved with youth after they leave school and child serving systems
- Need for Adult Allies



Institutional Transitions

- Mediated by bureaucratic and legal, rather than cultural or natural, guidelines.
- Requirements to access services, pay sources, philosophy and approach to services differs.

Looking for a Job?



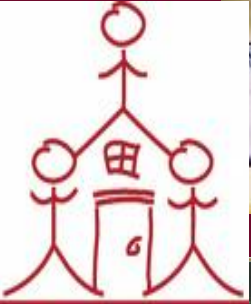
Independent Living is not...

Independent Living is...



Juvenile Justice & Mental Health Working Together for the Best Outcomes for Youth With Serious Emotional Disorders

FROM IDEAS TO ACTION: LED YOUTH'S HEALTH PRO



GED



Youth with Disabilities in the Juvenile Justice System By Rene Anderson Tampa, Florida



Child Welfare Services



A CONSUMER'S GUIDE TO MENTAL HEALTH SERVICES INVOLVING THE INTEREST AND SCIENCE OF PSYCHIATRY



Looking for a Job?



Independent Living is not...

Independent Living is...



Child Welfare Services



A CONSUMER'S GUIDE TO MENTAL HEALTH SERVICES



Juvenile Justice & Mental Health Working Together for the Best Outcomes for Youth With Serious Emotional Disorders

FROM IDEAS TO ACTION WITH DR. PHOENIX



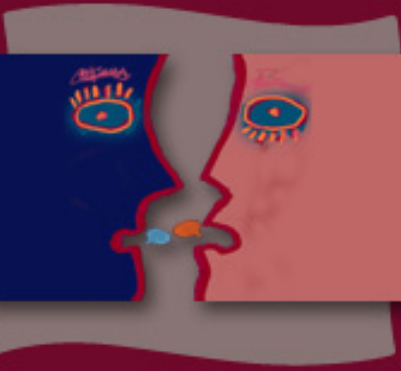
GED



Youth with Disabilities in the Juvenile Justice System

By Rene Anderson Tampa, Florida





**MAKE IT
STOP!!!!**



Game Change

Where have
we been



Service Challenges

**Typical Services
result in
poor young
adult outcomes**



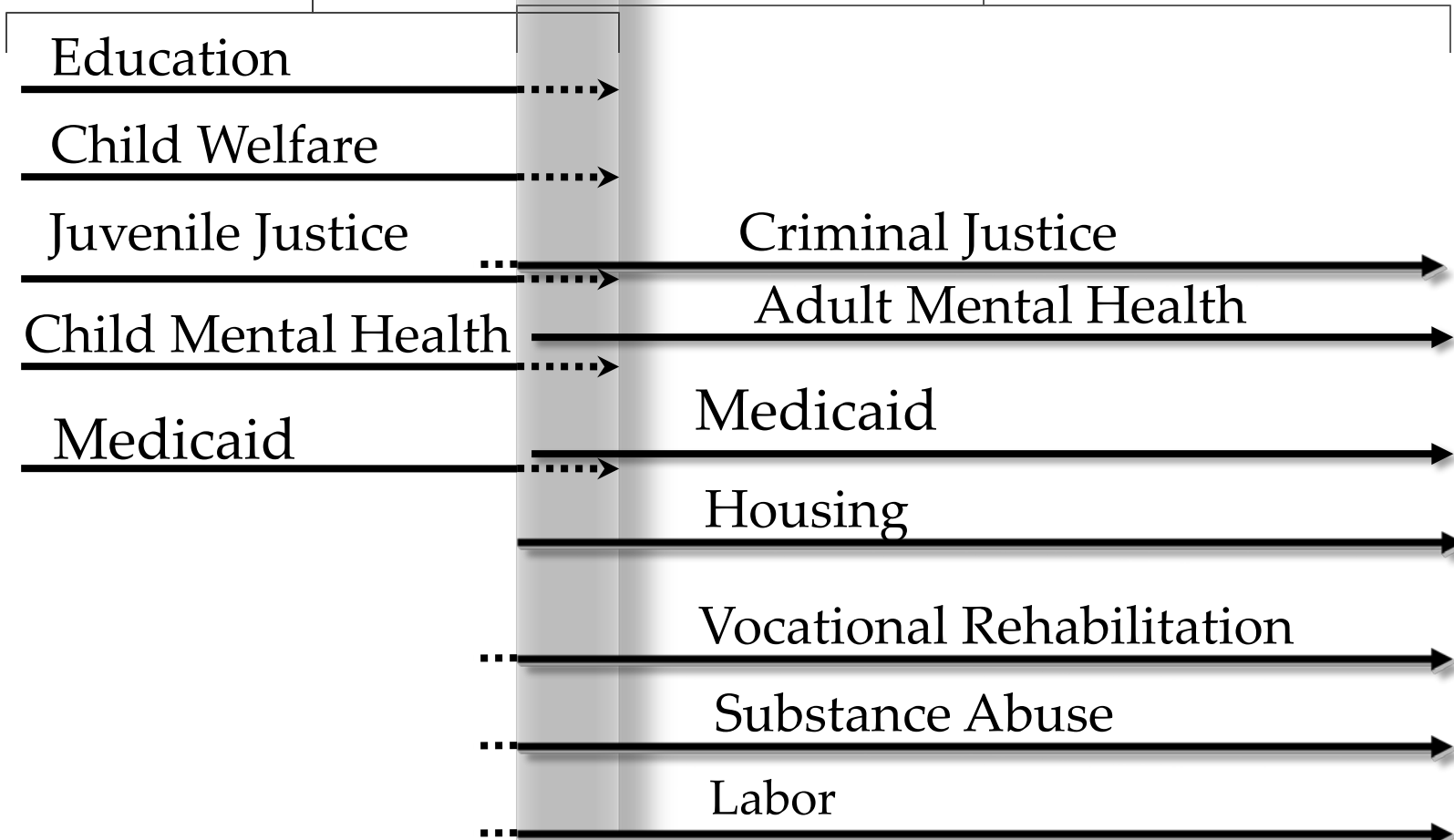
Youth with SED Struggle as Adults

Poor Outcomes:

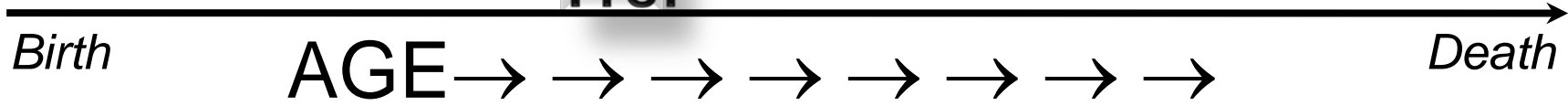
- Employment
- Education
- Living Situations
- Pregnancy Planning
- Justice Systems
- Substance Abuse

CHILD SYSTEM

ADULT SYSTEM



**18-
21
Yrs.**





Game Change

Where do we
need to go?

A stylized graphic of a human head profile in shades of blue and red. The brain area is highlighted in blue with a yellow eye-like shape. The eye is a large, stylized blue eye with a yellow pupil. The mouth is a simple red line. The background is a light blue gradient.

What Works

- Programs that establish trust and safety
- Programing that offers skill building and empowerment opportunities
- Connecting with others in similar situations and experiences
- Programs that are not Dx focused but support based.

A stylized graphic of a human head profile in shades of blue and red. The brain area is filled with a blue color and contains a small circular logo with a star and the word 'VIBRA'. The eye is a large, stylized blue eye with a red outline. The background of the slide is a dark red color with a faint, large-scale pattern of interlocking gears.

What Works

- *Shift to a young adult driven approach*
- *Engage young adults as true partners in the work*
- *Provide them leadership skill and opportunities to apply them*
- *Build connections to peers and adult allies*



CHANGE



Where is Your Community?

- Engagement is different
- Enrollment is different
- Respect and Understand Youth Culture
- Young Adults want a Job / Place to live



Replication Issues

- Trauma Informed Care
- Work from a Position of Hope
- Flexibility is Necessary
- Community Base and Easy Access
- Youth Competent Organizations and Workforce



Ch...Ch...Ch...CHANGES...

Take Home Strategies

It's About Changing Lives

