



WESTERN REGION
**Recovery & Wellness
Consortium**

COORDINATED SPECIALTY CARE [CSC]
FIRST EPISODE OF PSYCHOSIS [FEP] SERVICES

Now Is The Time Conference
UW-Whitewater

August 2, 2023

CHOICES



milkweed
connections



Why was supports for those living with first experiences of voices or voices or other signs of possible psychosis pursued by our nine-county Wisconsin region?



RECOVERY & WELLNESS



CONSORTIUM

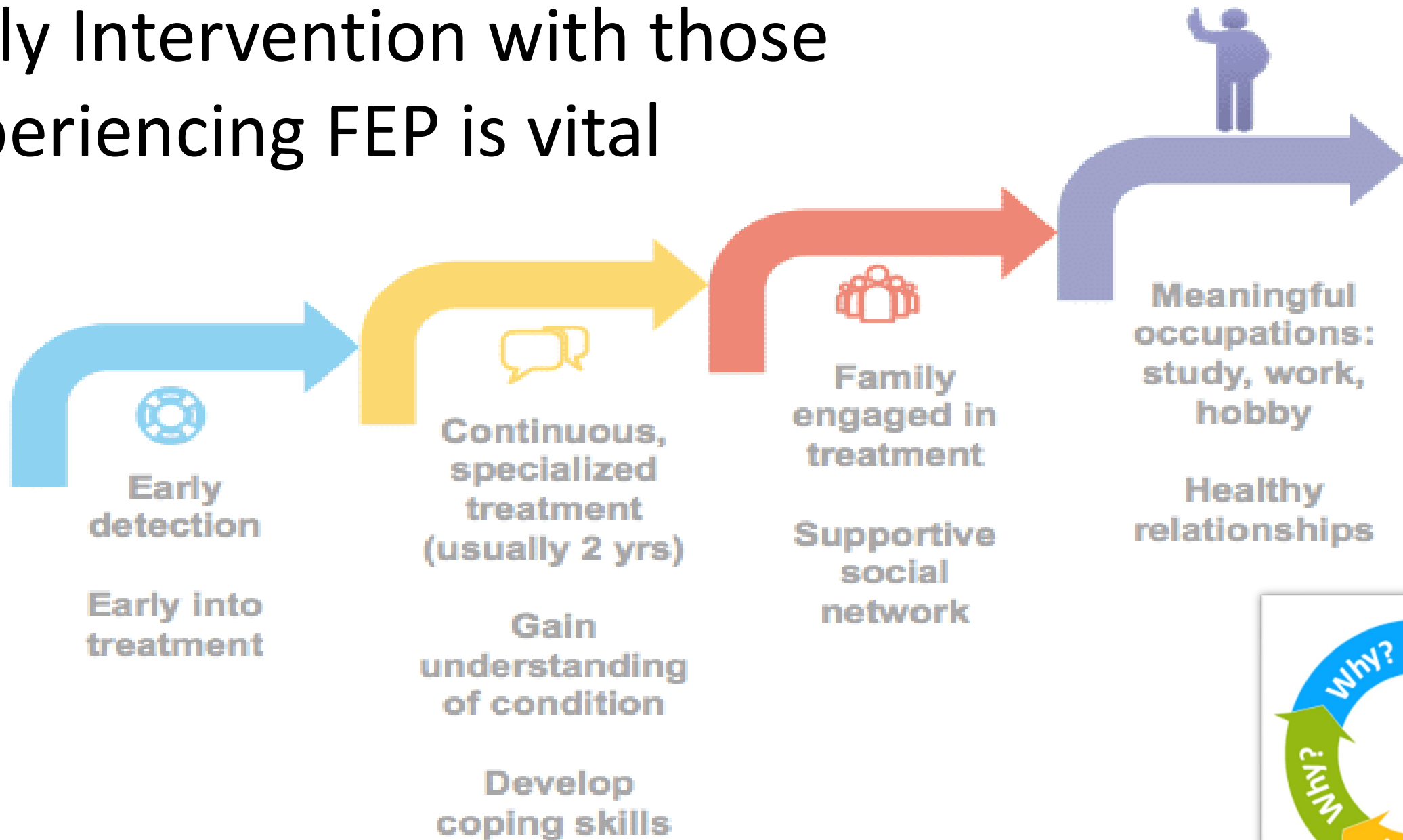
Buffalo, Burnett, Chippewa, Dunn,
Pepin, Pierce, Polk, Rusk, & Washburn



It is predicted that numerous youth and young adults will have first experiences of psychosis each year within the nine county region.



Early Intervention with those experiencing FEP is vital





In Oct 2019, Department of Health Services awarded Dunn with a 5 year Grant.

Fast forward to today's collective impact of the program and practices.

CHOICES

is a community program for individuals with first experiences of voices, visions, and other signs of possible psychosis

**3+ Year
Program
Update**

64 Referrals ranging in ages of 12-25 YO

7 Referring RWC Counties: Buffalo, Burnett, Chippewa,
Dunn, Pierce, Polk, & Washburn

**May
2020
to
Aug
2023**

Of referred, served or serving 49 Individuals

18 individuals and support systems are served through individual, family, team, and peer group interactions

- 7 of 18 (40%) are within CCS teaming

choose

CUR
-IOS
ITY



over fear

**gaining strength
over voices**

**listen
to
some
voices**

let's

connecting with
others with shared
experiences

v
a
l
i
d
a
t
e

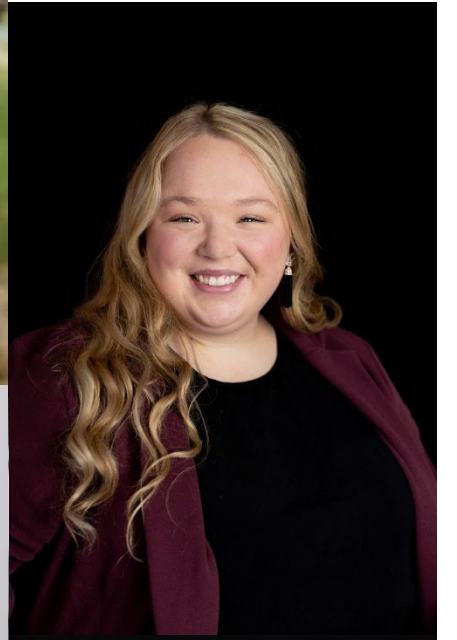
set
limits
with
voices

talk

**discover
the
meaning
of the voices**

schedule a
meeting
with the voices

organizing the voices



CHOICES
TEAM



CHOICES TEAM

Milkweed Connections Peer Specialists

Brett Paulson

Hope Kissinger

Kate Laird

Ombasa Nyachio

Rachel Hayden

Ryan Sawyer

Terra Loiselle

Social Worker & CCS SF

Ellie
McKee

Therapists

Greer Gust

Danielle
Barnhart

Nurse

Cara
Helmer

Educational & Employment Specialist

**Tricia
Thompson**

Tiffany
Franklin

Program Lead

Sara Olinger

WELCOME

panel member's introductions first with individual perspectives about why *supporting youth and young adults with first experiences of voices, visions or other signs of possible psychosis* is important



SHARE WHAT HAS BEEN
MEANINGFUL ABOUT
CHOICES



“

NEVER DOUBT THAT A SMALL GROUP
OF THOUGHTFUL COMMITTED CITIZENS
**CAN CHANGE
THE WORLD;**
INDEED, IT IS THE ONLY THING THAT EVER HAS.

”

- Margaret Mead (1901-1978)



Thank You!



- <https://www.hearing-voices.org>
- <https://wildfloweralliance.org>
- <https://www.milkweedconnections.com/>
- <https://www.co.dunn.wi.us/humanservices>